

**TRURO
SCHOOL**
ENTERPRISES LTD

Residential & Group Accommodation 2020



Truro School, Trennick Lane, Truro, Cornwall TR1 1TH



TRURO
SCHOOL
ENTERPRISES LTD

Residential & Group Accommodation 2020

Set in a beautiful location overlooking the city, Truro School is able to offer full board accommodation in our comfortable boarding houses over the Easter and Summer holidays.

Whether you are a visiting choir, sports team or planning trip for a group residential, we can provide everything you need to make your stay as relaxed as possible, all at an affordable price.

Our in house professional catering team can provide your group with up to three meals a day and we have a fabulous choice of facilities on site which can be hired during your stay.





TRURO
SCHOOL
ENTERPRISES LTD

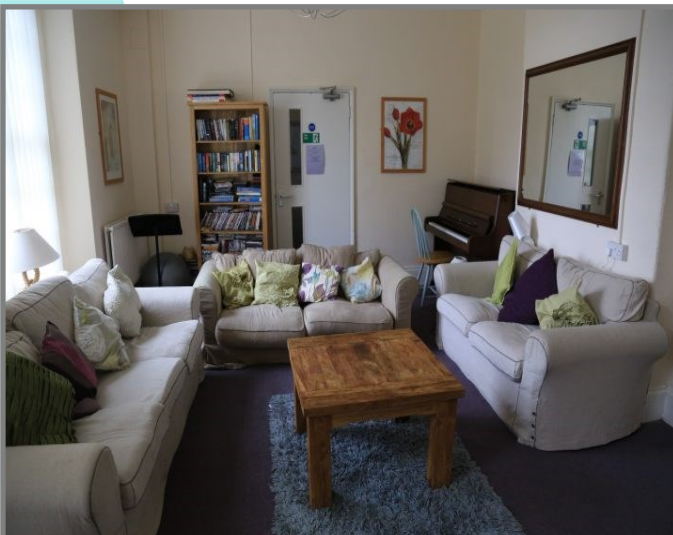
Malvern House



Malvern House is a large Georgian building near the entrance to the school drive. It has 21 bedrooms with a combination of single, twin, triple and quadruple rooms. There is a spacious kitchen with dining area and common room with Sky TV, comfortable sofas and a piano. The house has shared bathroom facilities comprising of 6 toilets and 6 showers.

The common room and kitchen are on the ground floor. Bedrooms are located on the first and second floors and also in a bungalow extension at the rear of the property.

Entry to Malvern house is via the first floor meaning there are steps to access each part of the house.





TRURO
SCHOOL
ENTERPRISES LTD

Pentreve House



Pentreve House originally opened as a Truro School boarding house in 1930.

This beautiful house is arranged over three floors with 7 bedrooms each accommodating 2 to 3 people.

Pentreve has a light and spacious common room with Sky TV, a separate kitchen and shared bathroom facilities comprising of 4 showers and 6 toilets.

The house is situated adjacent to Malvern House at the entrance to the school drive.





TRURO
SCHOOL
ENTERPRISES LTD

Poltisco House



Poltisco House is a beautiful Georgian house, situated off Malpas Road. There is direct access from the house to the school site via a steep footpath with steps which leads to the main school building and dining room.

Poltisco sleeps a maximum of 13 people, with 5 bedrooms arranged over two floors. The beds are all high sleeper cabin beds with ladders for access.

It has a lounge on the ground floor with Sky TV, kitchen area and piano.

The house has shared bathroom facilities comprising of 3 toilets and 3 showers.





TRURO
SCHOOL
ENTERPRISES LTD

Trennick House



Trennick House is situated on the first and second floor of the main school building within easy reach of the dining hall and closest to other school amenities.

The first floor has 18 bedrooms, a combination of single, twin and triple rooms. 6 showers and 6 toilets.

The upper floor has 16 bedrooms also with a combination of single, twin and triple rooms and one quadruple room. All bathroom facilities are shared, with 6 showers and 8 toilets. There is a large common room with comfy sofas, a pool table and Sky TV.

In addition to the main boarding house is a self contained flat which can be hired Independently. This comprises of a small kitchen, bathroom and 3 bedrooms.





TRURO
SCHOOL
ENTERPRISES LTD

Facilities for Hire

During your stay at Truro School you also have access to a wide range of facilities to enhance your visit. We can provide you with classrooms, meeting rooms, rehearsal and performance spaces and much more.

The Sir Ben Ainslie Sports Centre on site offers excellent sports facilities including a 25m swimming pool, sports hall and fully equipped gym.

More information can be found on our Truro School Enterprises website
www.truroschooleenterprises.com





TRURO
SCHOOL
ENTERPRISES LTD

Rates 2020

Residential & Group Accommodation Rates 2020

Full board	£48pppn Bed, Full English & Continental Breakfast, Lunch and Dinner
Half Board	£42pppn Bed, Full English & Continental Breakfast and Dinner
Bed & Breakfast	£33pppn Bed & Full English & Continental Breakfast
Bed only	£27pppn Accommodation only

Prices above include VAT @ 20%

Terms and Conditions:

3 night minimum stay

Catered accommodation available for minimum of 10 guests.

Schools and educational establishments are excluded from VAT

Meals

All meals are available from the dining hall servery at the following times:

Breakfast 8.00am

Lunch 12.30pm

Dinner 6.00pm

If you require different times please let us know as soon as possible and we will do our best to accommodate you.

Packed lunches are available if ordered 48 hours in advance

We can cater for any special dietary requirements if notified prior to your arrival.

Important Accommodation Information

Please tell us if you have any mobility-impaired guests. The school is located on a steep hill so we have many steps and steep paths to and from the boarding houses. There are a limited number of ground floor rooms available.

Please talk to us about any specific requirements before your arrival.

Rooms available can sleep 1-4 people depending on capacity. Single occupancy must be requested in advance.

Toilet facilities and shower rooms are shared.

All guests are provided with a made up bed including hypo-allergenic pillow and duvet and a towel.

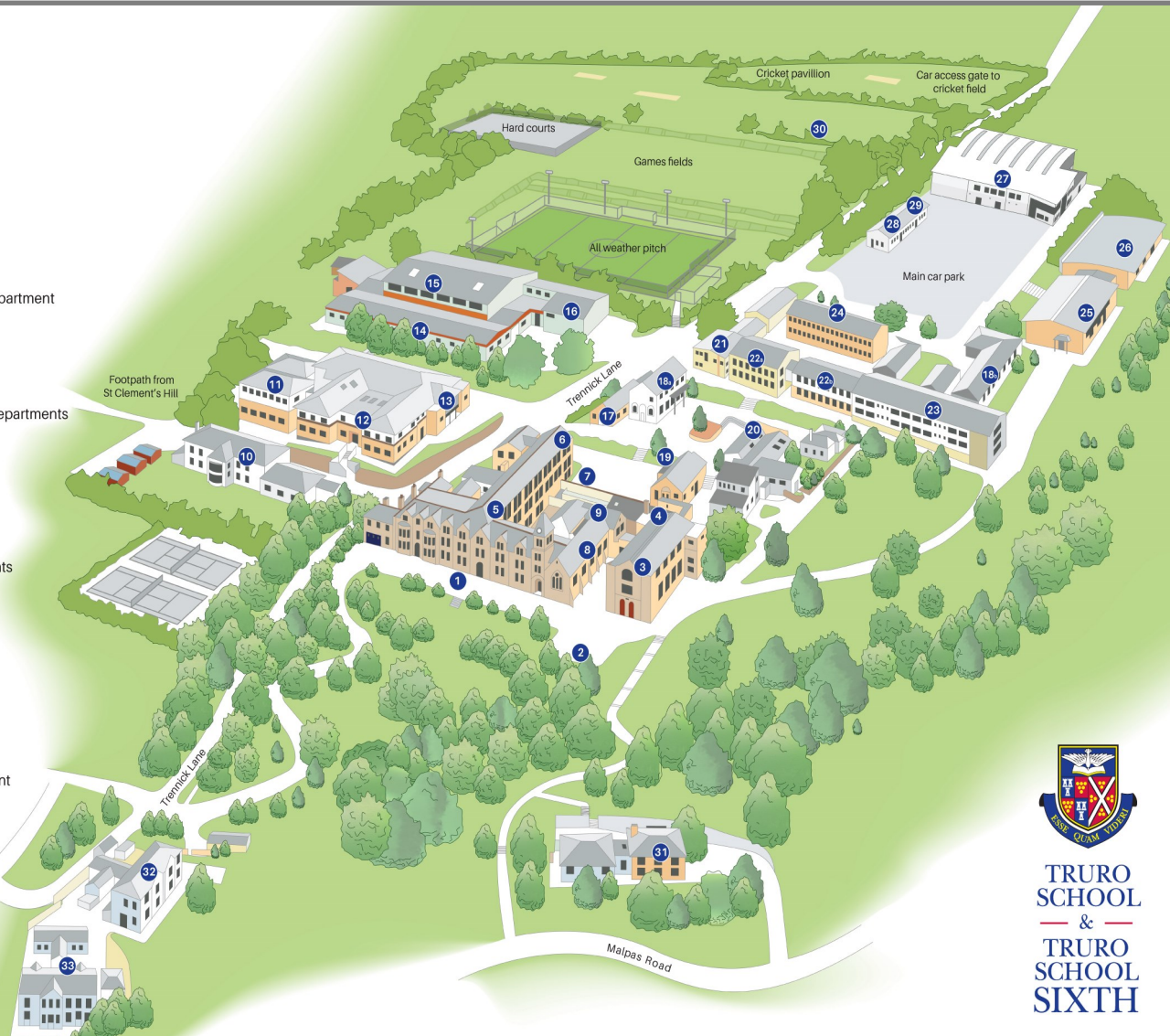


TRURO
SCHOOL
ENTERPRISES LTD

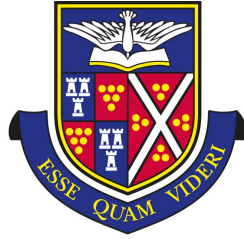
Campus Map

key

- 1 School Reception
- 2 Headmaster's Visitor Parking
- 3 Chapel
- 4 Heseltine Gallery & Studio
- 5 Trennick Boarding House
- 6 Medical Centre
- 7 Learning Support Centre
- 8 Library
- 9 ICT Department
- 10 Music Department
- 11 Modern Foreign Languages Department
- 12 Burrell Classrooms
 - History Department
 - Psychology Department
- 13 Burrell Theatre
 - Drama Department
- 14 Art and Design & Technology Departments
- 15 Sports Hall
- 16 Outdoor Education Centre
- 17 5th Year Common Room
- 18 Maths Department
- 19 Sixth Form Café
- 20 Sixth Form Centre
- 21 Religious Studies Department
- 22 Physics & Chemistry Departments
- 23 Graham Smith Block
 - Geography Department
 - Geology Department
 - English Department
- 24 Biology Department
- 25 Fencing Salle
- 26 Swimming Pool
- 27 Sir Ben Ainslie Sports Centre
 - Business Studies Department
 - Economics Department
 - Physical Education Department
- 28 The Cookery School
- 29 Truro School Café
- 30 Overflow Car Park
- 31 Poltisco Boarding House
- 32 Pentrevie Boarding House
- 33 Malvern Boarding House



TRURO
SCHOOL
— & —
TRURO
SCHOOL
SIXTH



**TRURO
SCHOOL**
ENTERPRISES LTD

events@truroschooll.com

01872 246059 or 01872 246039

Truro School Enterprises

Truro School

Trennick Lane

Truro

Cornwall

TR1 1TH

www.truroschoollenterprises.com